

# geo / gea

design arch. anna e carlo bartoli

Due particolari divani dalle diverse caratteristiche formali e tecniche.

La struttura è realizzata completamente in tubolare metallico con cinghie elastiche.

L'imbottitura, realizzata con schiume poliuretaniche a quote differenziate (sedile e schienale) con stampaggio a freddo in poliuretano (braccioli), è avvolta da una materassina in Dacron.

Braccioli smontabili con speciali attacchi per il rivestimento.

Versione in tessuto completamente sfoderabile.

GEO: sostegni in acciaio cromato con ruote a stampo.

GEA: sostegni in tubo di alluminio anodizzato con dischi in plexiglass torniti e lucidati.

Disponibili a richiesta nella versione ignifuga.



**GEO - GO 170**  
Sofa (170 x 95 x 82 h)



**GEA - GA 182**  
Sofa (182 x 93 x 76 h)



Two particular sofas with different technical and shape characteristics.

Structure in metal tubing with elastic belts.

Padding, entirely wrapped in soft Dacron Dupont, is in polyurethane foams in different densities (seat and back) and in soft moulded Rofoam (armrests)

Armrests can be easily disassembled and have special fastening for covers.

Fabric version has completely removable covers.

GEO: supports in chromed steel with moulded castors.

GEA: supports in anodized aluminium tubing with polished plexiglass feet.

Available also fire retardant version.



**COVERINGS in 1258**

a special bi-elastic 100% heavy Wool-Lycra fabric (750gr/m2)

**GEO**

Sofa (170 x 95 x 82 h)

**GO 170**

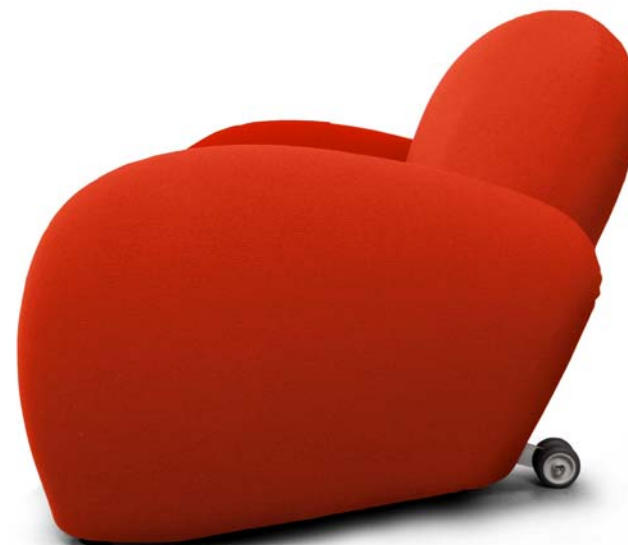
*GEO – design Arch. Anna & Carlo Bartoli*

**rovi di albizzate**  
dal 1935



**COVERINGS in 1258**

a special bi-elastic 100% heavy Wool-Lycra fabric (750gr/m2)



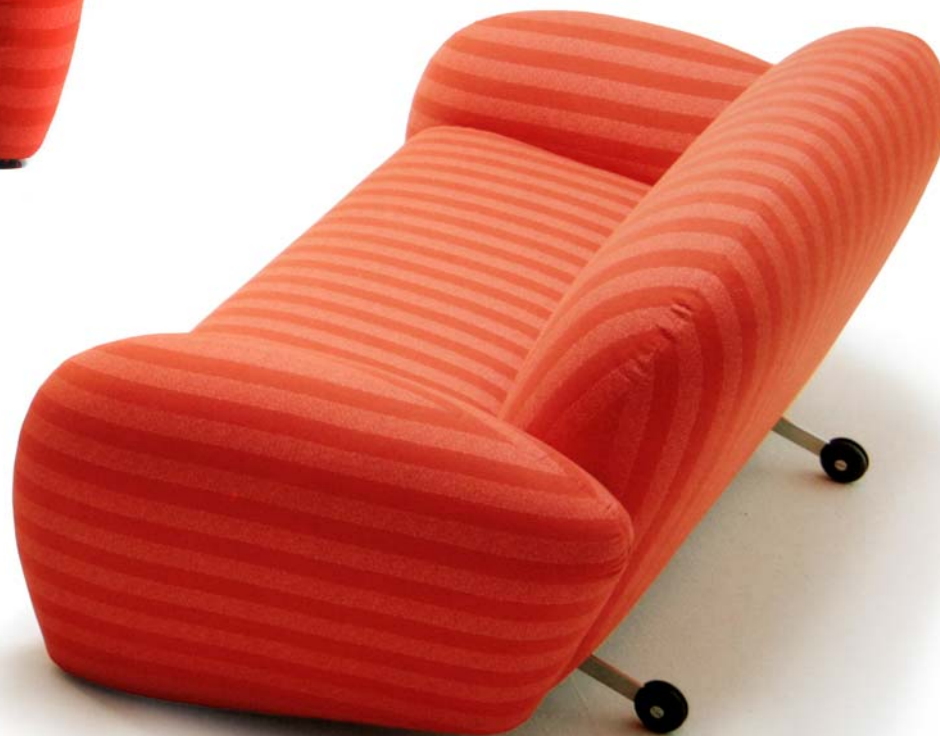
**GEO**

Sofa (170 x 95 x 82 h)

**GO 170**

*GEO – design Arch. Anna & Carlo Bartoli*

**rovi di albizzate**  
dal 1935



**COVERINGS** in  
fabric category M

**GEO**  
Sofa (170 x 95 x 82 h)  
**GO 170**

*GEO – design Arch. Anna & Carlo Bartoli*

**rovi di albizzate**  
dal 1935



**COVERINGS in 1258**

a special bi-elastic 100% heavy Wool-Lycra fabric (750gr/m2)

**GEA**

Sofa (182 x 93 x 76 h)

**GA 182**

*GEA – design Arch. Anna & Carlo Bartoli*

**rossi di albizzate**  
dal 1935



**COVERINGS in 1258**

a special bi-elastic 100% heavy Wool-Lycra fabric (750gr/m2)

**GEA**

Sofa (182 x 93 x 76 h)

**GA 182**

*GEA – design Arch. Anna & Carlo Bartoli*

**rossi di albizzate**  
dal 1935



**COVERINGS in 1258**

a special bi-elastic 100% heavy Wool-Lycra fabric (750gr/m2)

**GEA**  
Sofa (182 x 93 x 76 h)  
**GA 182**

*GEA – design Arch. Anna & Carlo Bartoli*

**rovi di albizzate**  
dal 1935



Bordighera - Disco Club Betize

GEA & GEO – design Arch. Anna & Carlo Bartoli





SENTIDO Zeynep Golf & Spa Hotel – Belek-Serik TURKEY

**rovi di albizzate**  
dal 1935



Manchester - **Hotel Arora International**



Milano - **Private Villa**

GEA & GEO – *design Arch. Anna & Carlo Bartoli*

TESSUTO SPECIALE ELASTICIZZATO IN LANA 100% DA USARE PER I SEGUENTI MODELLI:  
SPECIAL ELASTIC 100% WOOL FABRIC TO BE USED FOR THE FOLLOWING MODEL ONLY:  
ALEA - DONDOLO - DUMBO - GEA - GEO - KANJI - SHA - SHE - SHU - SLALOMS - SUPERSASSI - SUPERUOVO - TUBE



1258/1



1258/2



1258/3



1258/4



1258/5



1258/6



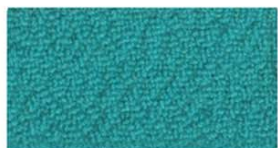
1258/7



1258/8



1258/9



1258/10



1258/11



1258/12



1258/13



1258/14



1258/15



1258/16



1258/17



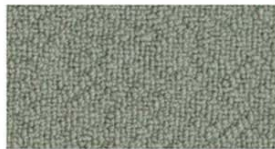
1258/18



1258/19



1258/20



1258/21

## COVERINGS in 1258

a special bi-elastic 100% heavy Wool-Lycra fabric (750gr/m2)

# rossi di albizzate

*dal 1935*

Head office and factory showroom

*Address :* Via Mazzini, 1 - 21041 ALBIZZATE (VA) Italy

*E-mail :* [info@rossidialbizzate.it](mailto:info@rossidialbizzate.it)

*Web Site :* [www.rossidialbizzate.it](http://www.rossidialbizzate.it)

*Tel :* +39.0331.993200

*Fax :* +39.0331.991583